

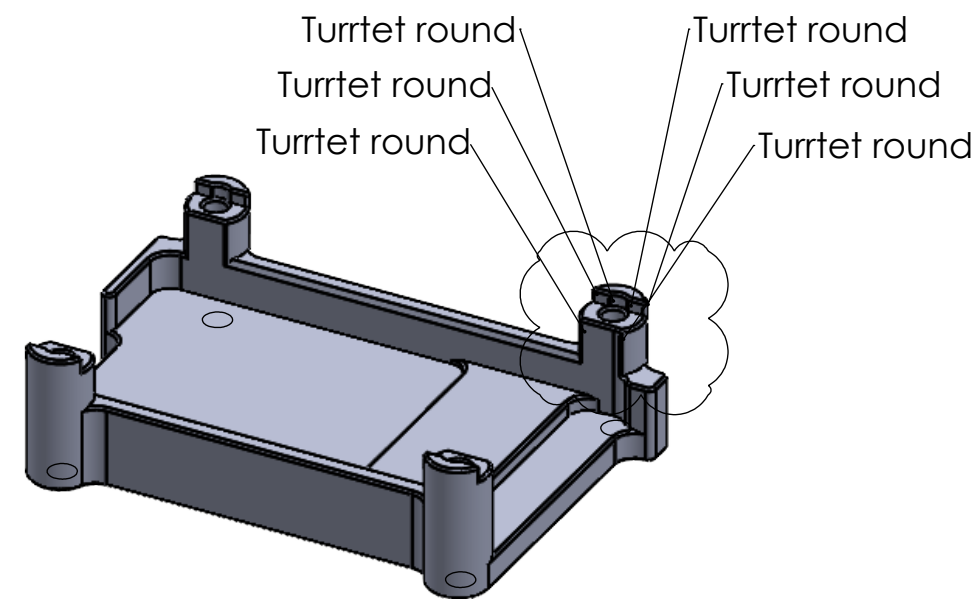
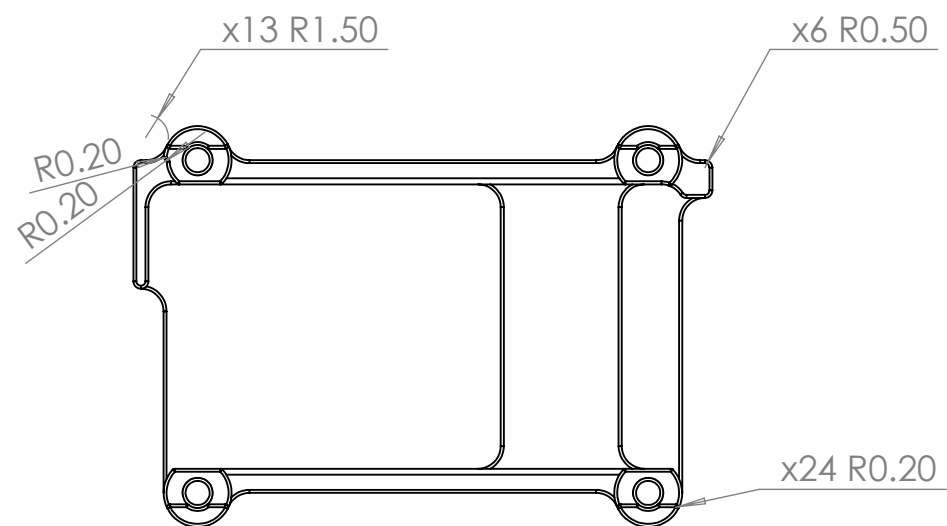




UNLESS OTHERWISE SPECIFIED: DIMENSIONS ARE IN MILLIMETERS TOLERANCES: ISO-2768-1 (Fine)				FINISH: As-machined		DEBURR AND BREAK SHARP EDGES		DO NOT SCALE DRAWING		REVISION		1.0.0			
INGENIA MOTION CONTROL															
		NAME		SIGNATURE		DATE								TITLE: DENALI CASE	
DRAWN		Alejandro Conde				01/16/23									
CHK'D		Arnau Solanellas				01/20/23									
APPV'D															
MFG															
Q.A															
 				MATERIAL:		DWG NO.						A3			
				Aluminum 6061-T6		i056A-M1 (THERMALPAD_1_5MM)									
				WEIGHT:		7.93 g				SCALE:2:1		SHEET 1 OF 3			

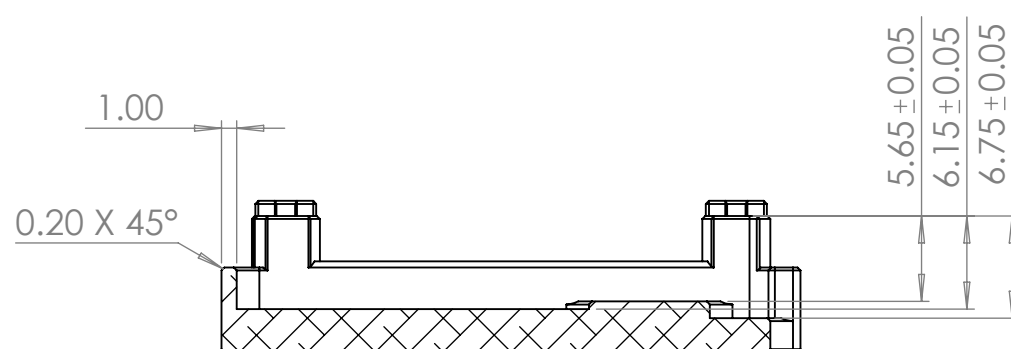
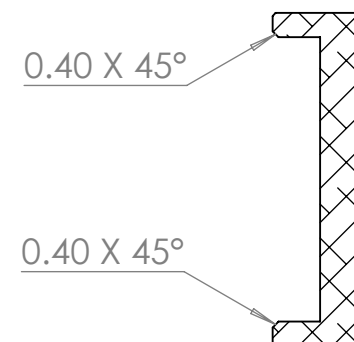
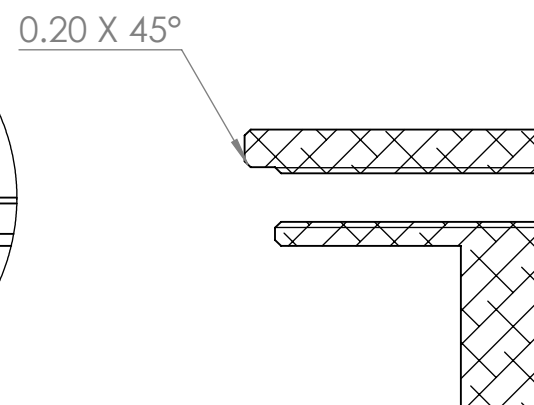
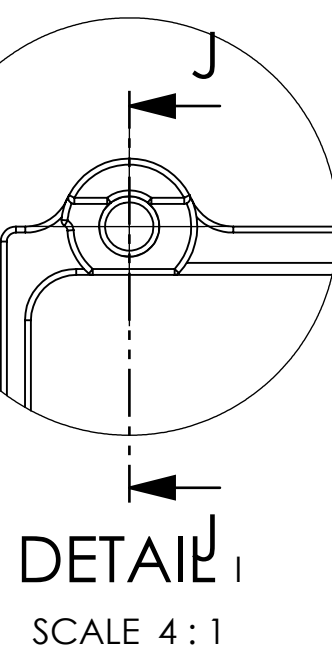
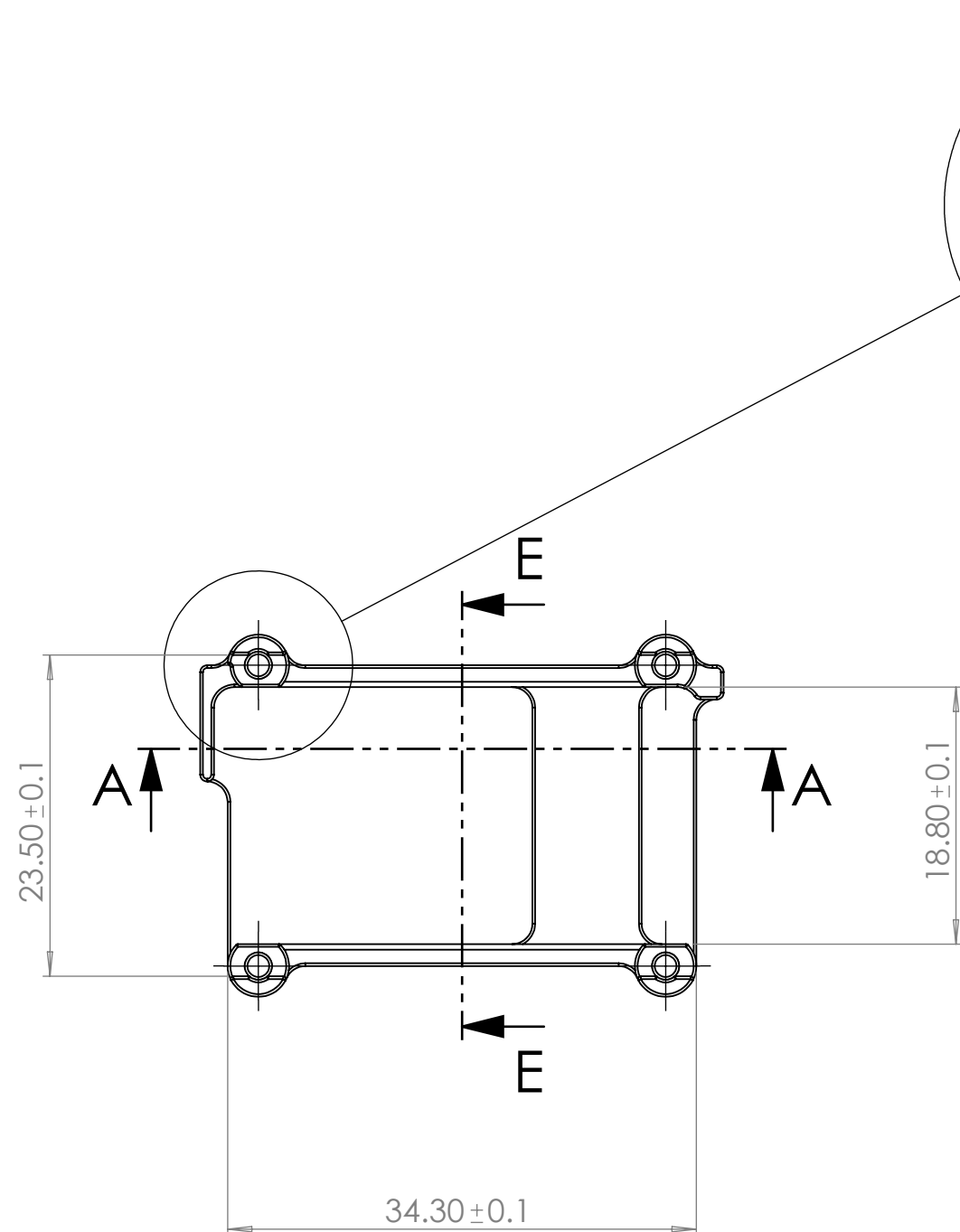


All fillets in this view have the same R1.5 mm.

All the rounds in this view, except the 6 rounds in the turrets, are R0.5 mm.

The rounds in the turrets are R0.2 mm.

UNLESS OTHERWISE SPECIFIED: DIMENSIONS ARE IN MILLIMETERS TOLERANCES: ISO-2768-1 (Fine)				FINISH: As-machined		DEBURR AND BREAK SHARP EDGES		DO NOT SCALE DRAWING		REVISION 1.0.0	
								INGENIA MOTION CONTROL			
								TITLE: DENALI CASE			
DRAWN		Alejandro Conde		SIGNATURE		DATE		01/16/23			
CHK'D		Arnau Solanellas				01/20/23					
APPV'D											
MFG											
Q.A											
						MATERIAL: Aluminum 6061-T6		DWG NO. i056A-M1 (THERMALPAD_1_5MM)		A3	
						WEIGHT: 7.93 g		SCALE:2:1		SHEET 2 OF 3	



All chamfers in the part are 0.20 X 45°, except the two chamfers indicated in the annotations of section E-E

UNLESS OTHERWISE SPECIFIED: DIMENSIONS ARE IN MILLIMETERS				FINISH: As-machined				DEBURR AND BREAK SHARP EDGES				DO NOT SCALE DRAWING				REVISION 1.0.0							
TOLERANCES: ISO-2768-1 (Fine)												INGENIA MOTION CONTROL											
		NAME		SIGNATURE		DATE								TITLE:		DENALI CASE							
DRAWN		Alejandro Conde				01/16/23																	
CHK'D		Arnau Solanellas				01/20/23																	
APPV'D																							
MFG																							
Q.A																							
								MATERIAL:				DWG NO.				A3							
								Aluminum 6061-T6				i056A-M1 (THERMALPAD_1_5MM)											
								WEIGHT:				7.93 g				SCALE:2:1				SHEET 3 OF 3			